

3911-3919 and 3923 Roland Ave. Baltimore City, MD 21211

Current Use: 6 fire damaged, abandoned single family row homes, each with City Water and City Sewer connections

If Lots 35 and 37 are added, the total site would be 19,840 sq.ft. = 0.455 acres.

The high rise apartment building just north of this size is zoned R-10, with a 200 sq.ft. per dwelling unit density.

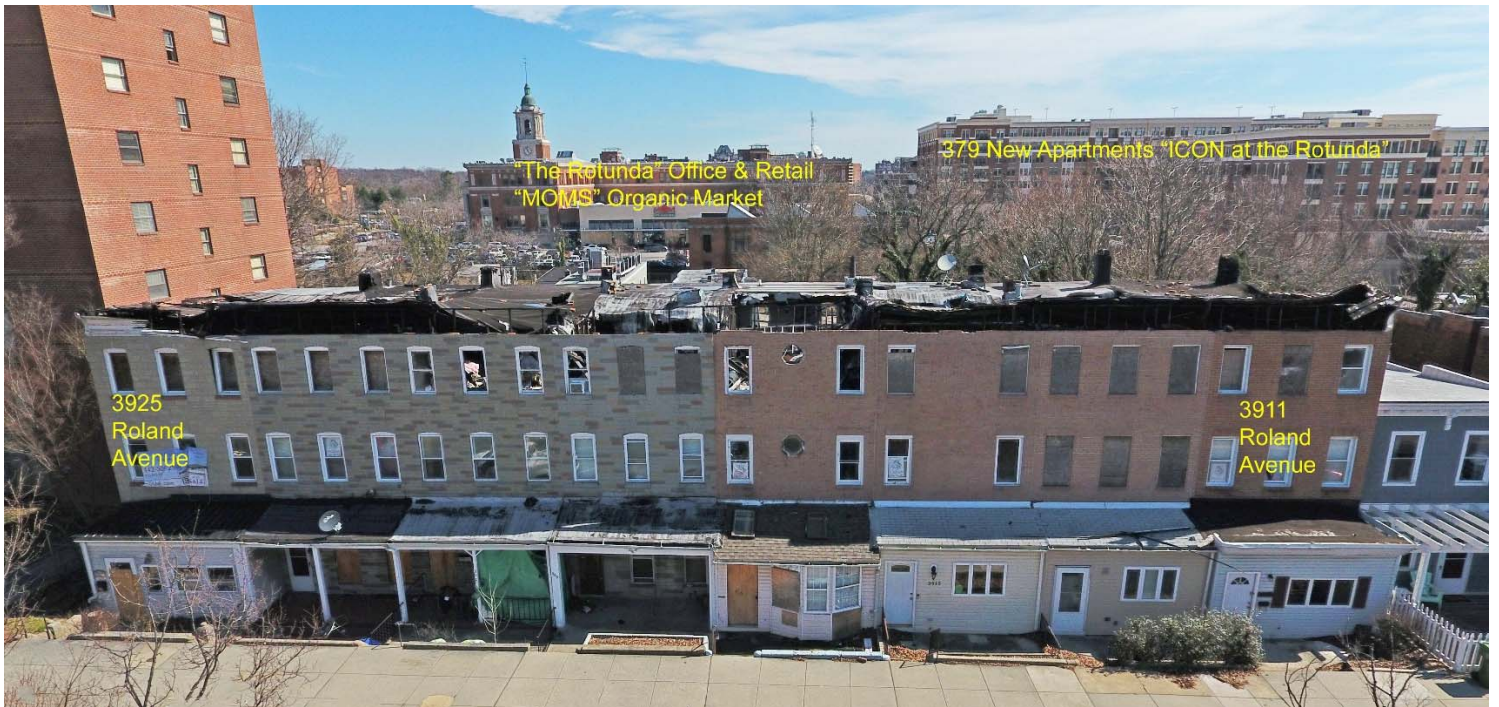
Offering: \$150,000 per lot. Terms: Cash to seller, closing in 90 days.

Contact: Ben Frederick III, CCIM, Ben Frederick Realty, Inc., Seller's Exclusive Agent, 410-752-6400,

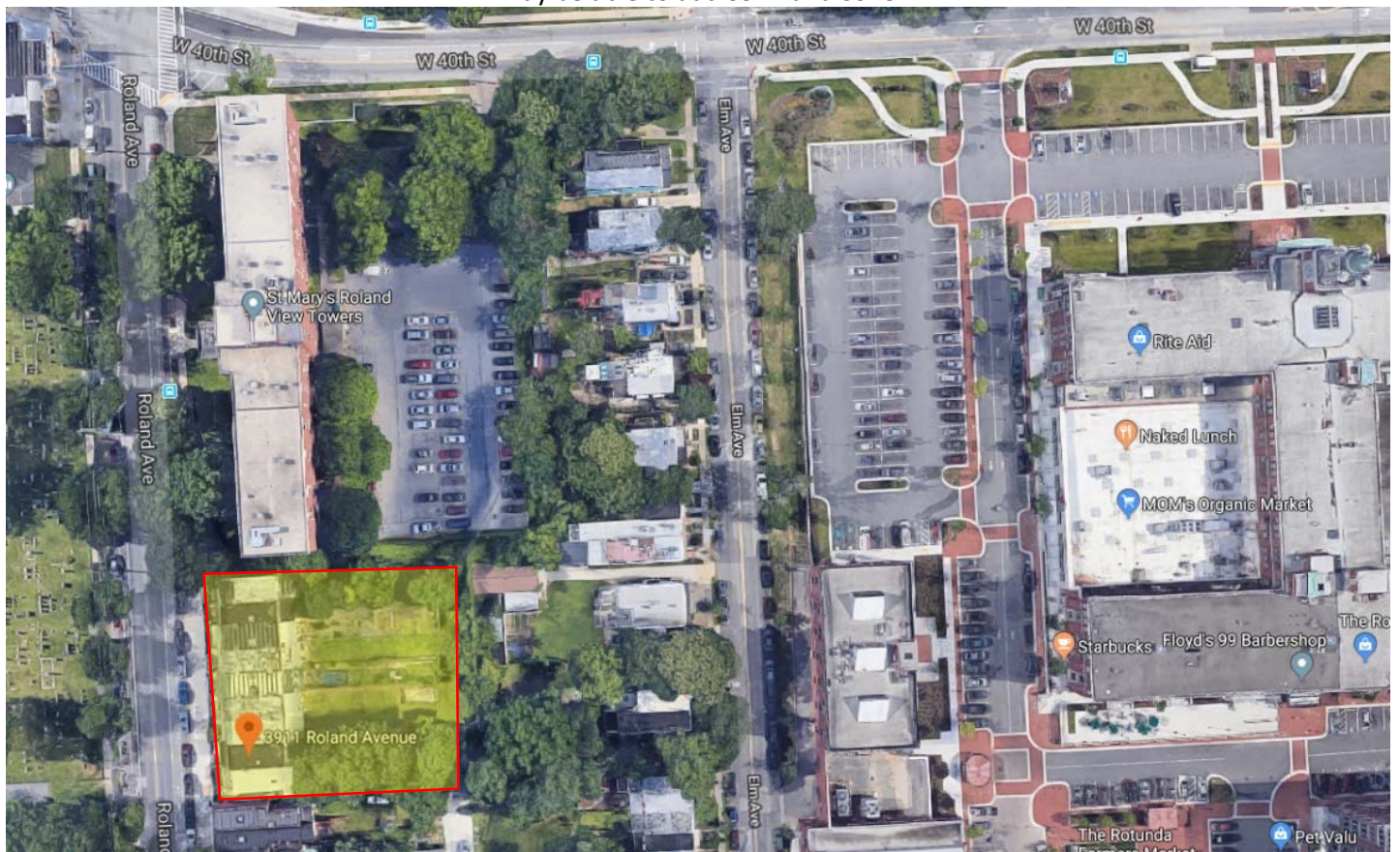
Ben@BenFrederick.com

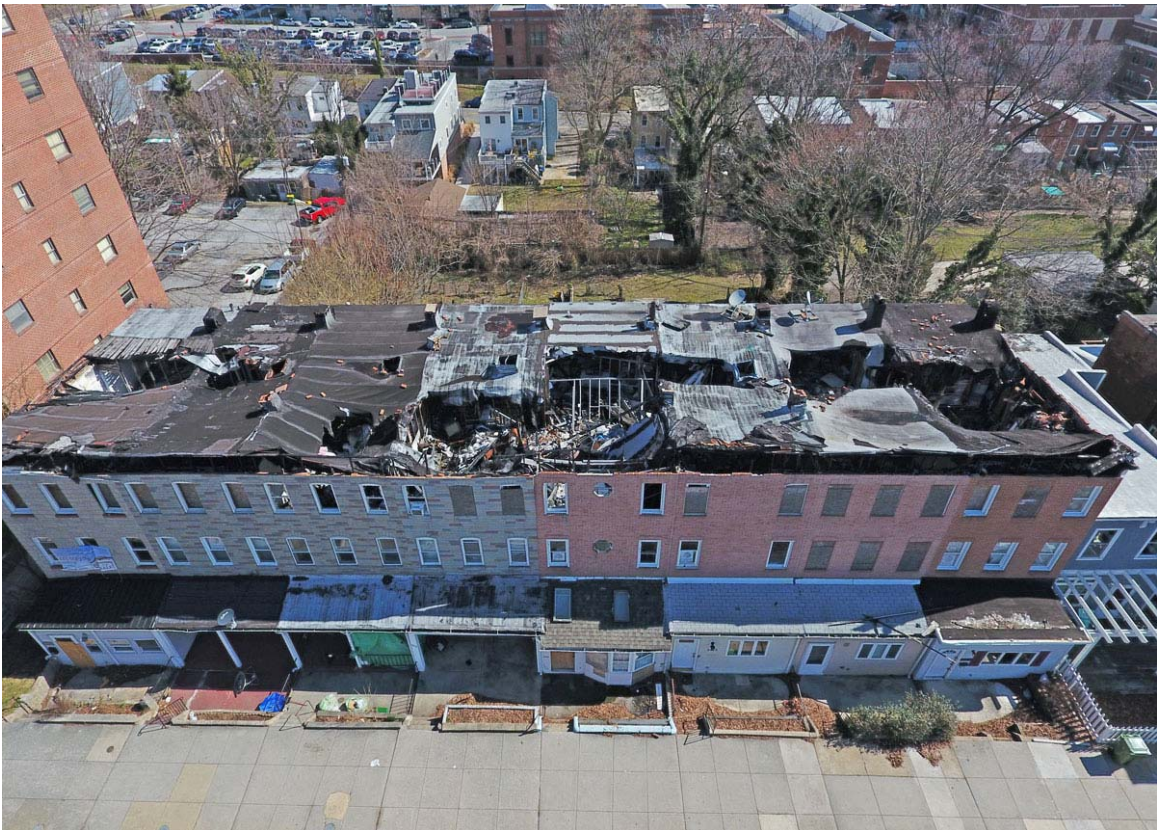


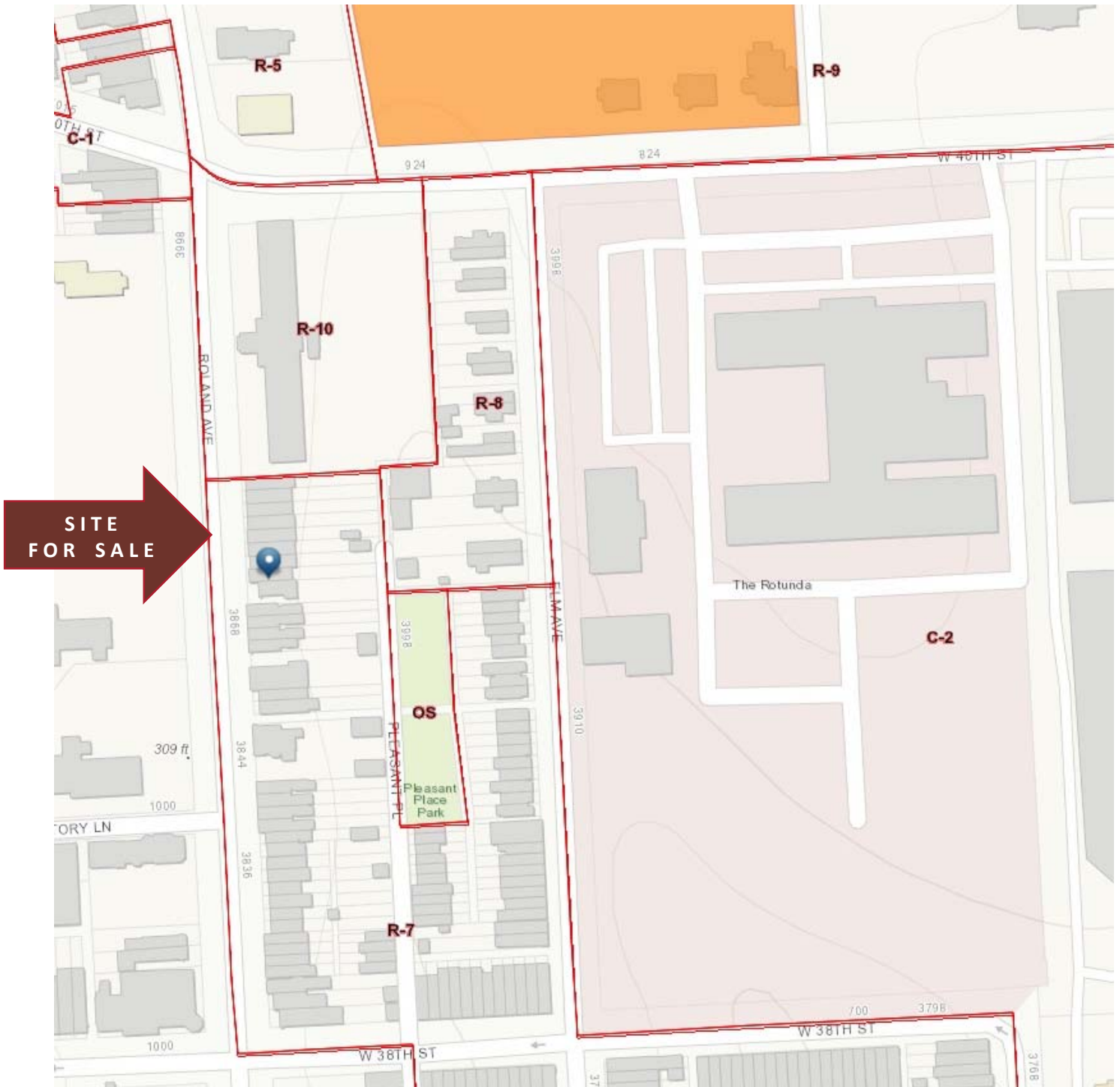
BALTIMORE'S APARTMENT
PROPERTY SPECIALIST



3911 to 3919 and 3923 Roland Avenue, Baltimore City, Maryland 21211
May be able to add 3921 and 3925







BEN FREDERICK REALTY
BALTIMORE'S APARTMENT PROPERTY SPECIALIST